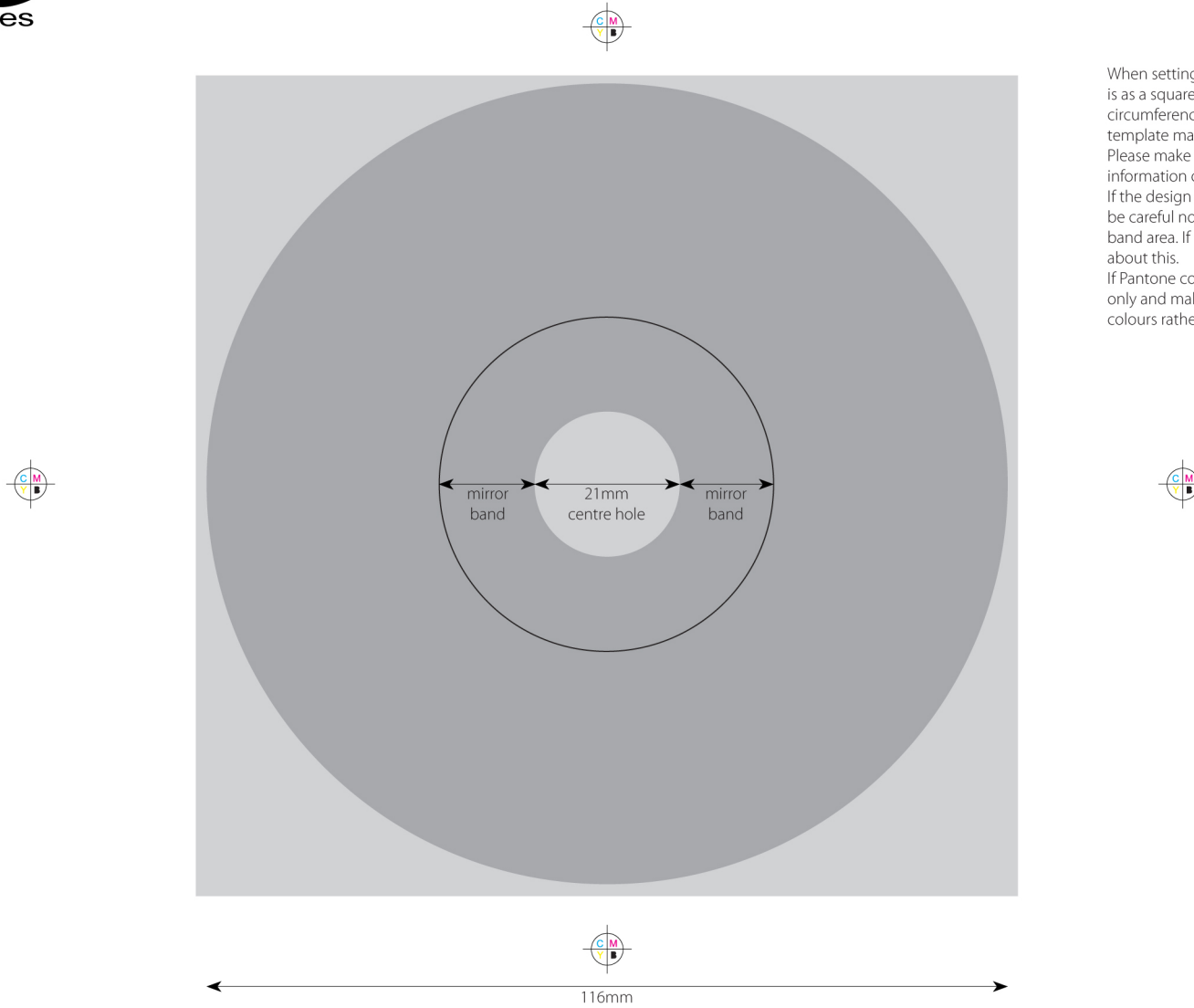


Printable area
Supplied image area



When setting up an onbody the ideal way to supply it is as a square document with no centre hole or outer circumference. That way all we have to do is apply it to our template mask.

Please make sure though that you have no text or important information outside what will be the printable area.

If the design is to be printed onto silver without a white base be careful not to have any text or image within the mirror band area. If it has a white base you don't need to worry about this.

If Pantone colours are to be used please use 'Solid Coated' only and make sure that the document is setup with these colours rather than just referencing them.

CD ONBODY PRINT

- Trim line
- Safety area
- Bleed line 3 mm

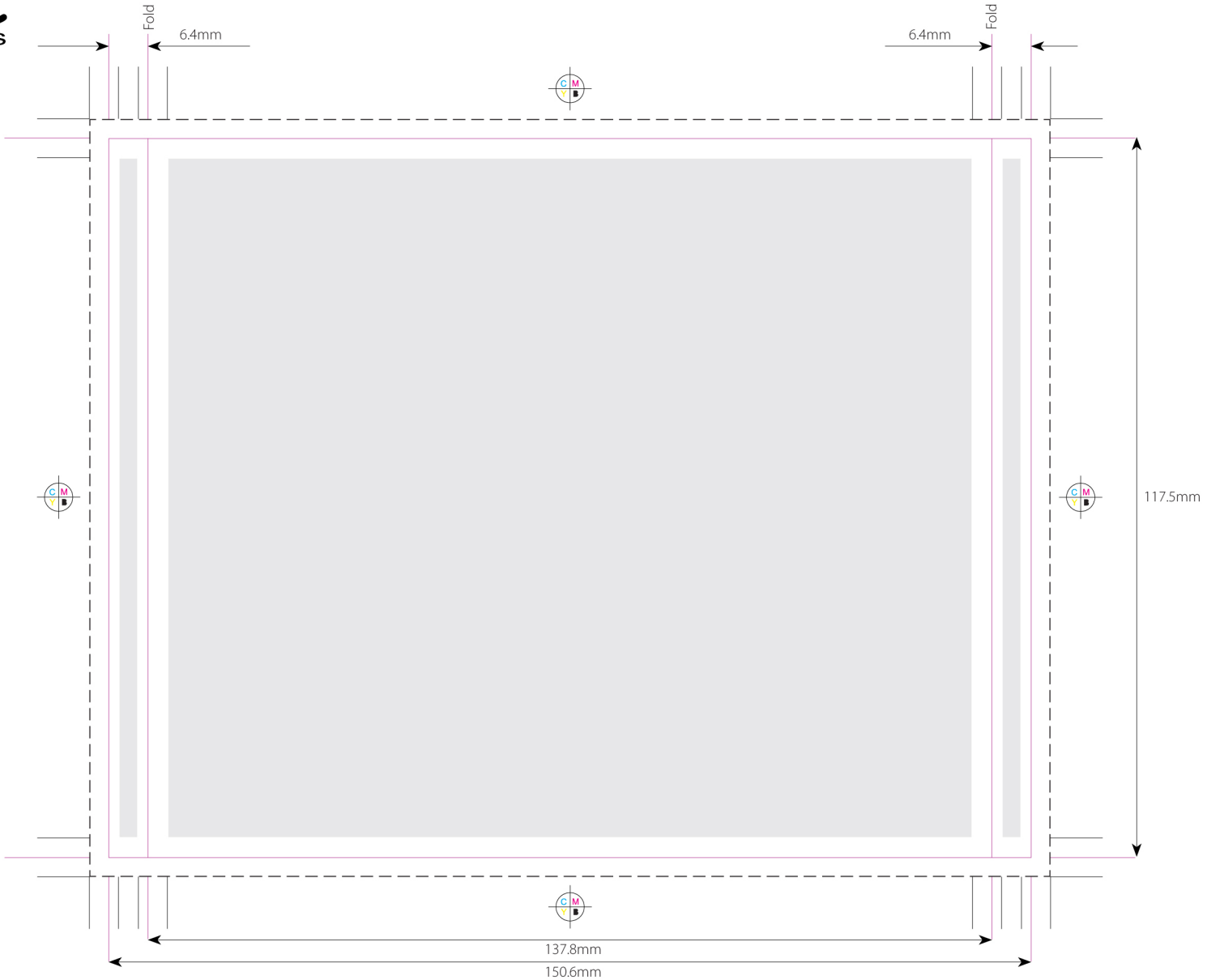


119.5mm

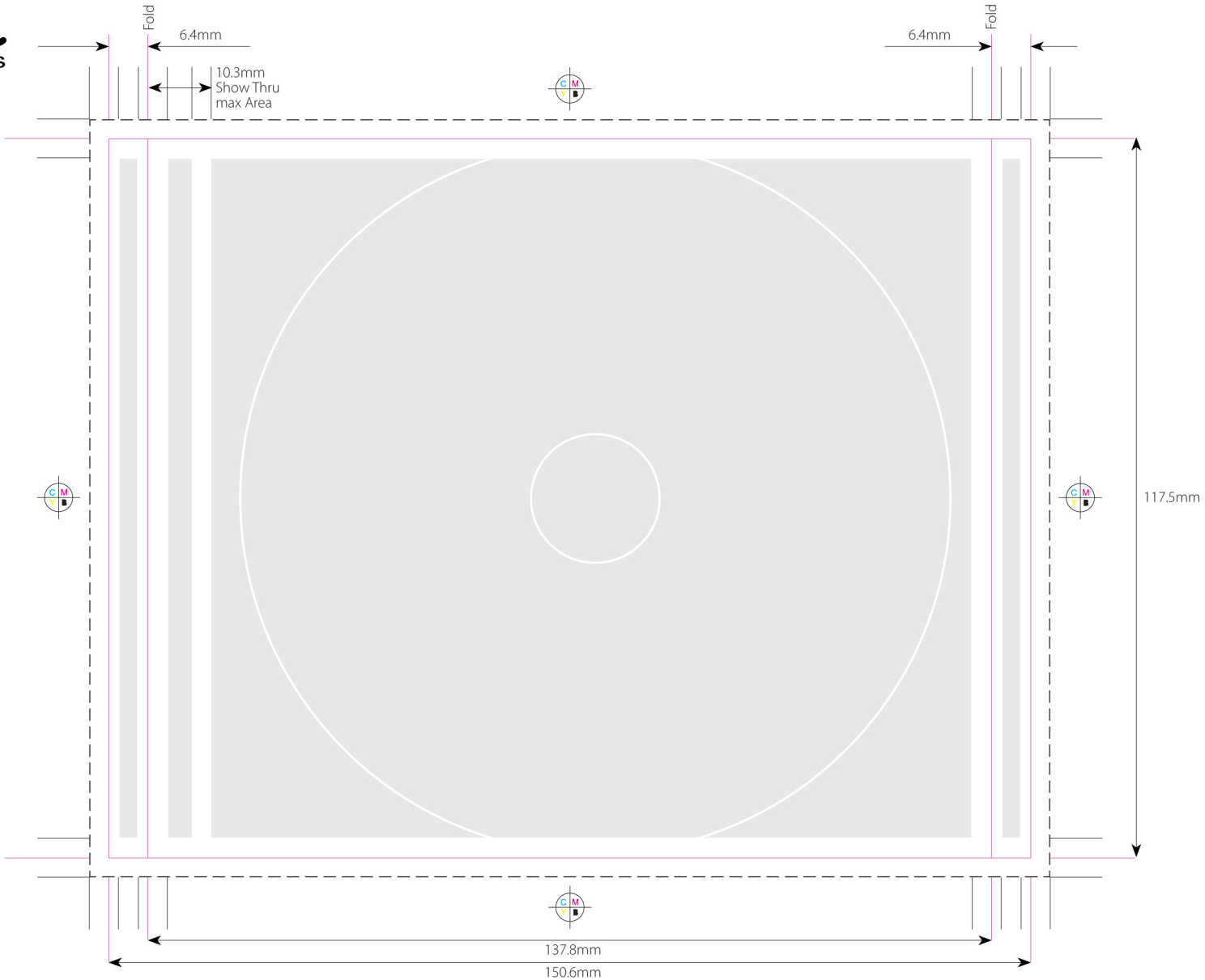
Page 1

120.5mm

JEWELCASE BOOKLET(2PAGE)



JEWEL CASE INLAY



INNER INLAY (ONLY WITH CLEAR TRAY)